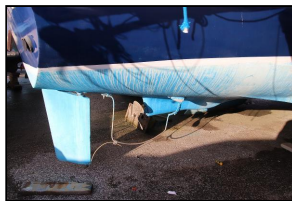




## Westerly Centaur – Sapphire



**Make:** Westerly  
**Model:** Centaur  
**Length:** 7.92 m  
**Price:** GBP 3,995  
**Year:** 1973  
**Condition:** Used

**Boat Name:** Sapphire  
**Hull Material:** Fibreglass (GRP)  
**Draft:** 0.91 m  
**Number of Engines:** 1  
**Fuel Type:** Diesel

### Sapphire

Designed by Laurent Giles and built by Westely Yachts in 1973 this B layout version has had the original engine replaced by a Lister Petter 30hp diesel.

With over 1500 built the Centaur design offers comfort and space with lots of headroom.

The cockpit is spacious, ideal for family cruising. The twin bilge keels allow her to take the ground comfortably.

The engine is a re built Lister Petter with only 20hrs use since being installed.

A mooring on the river Dee is available if required.

The accommodation comprises a total of five berths in two cabins. There are two single berths with infill in the fore cabin, and three berths in the saloon.

The separate heads compartment is situated to port with a door that can close across separate it from the saloon. It contains a sea toilet and a sliding wash basin.

## Measurements

---

LOA:	7.92 m	Displacement:	3039 kg
LWL:	6.5 m	Windlass:	Manual Windlass
Beam:	2.59 m	Electrical Circuit:	12V
Min. Draft:	0.91 m	Fuel Tanks #:	1
Max Draft:	0.91 m	Fuel Tanks Cap.:	45 L
		Fresh Water Tanks #:	1
		Fresh Water Tanks Cap.:	64 L
		Number of single berths:	3
		Number of double berths:	2
		Number of Heads:	1

## Propulsion

---

### Engine #1

Engine Make:	Lister Petter	Hours:	unknown
Engine Model:	LPW3	Power:	30 hp
Primary Engines:	Inboard		
Drive Type:	Shaft Drive		

## Additional Information

---

Galley:

Gas cooker with oven and grill

Sink

Sails:

Furling Genoa  
Mainsail (good)

Instruments:

Stingray echo sounder  
Hosun VHF radio

Equipment:

Spray hood  
Dodgers  
Cockpit cushions  
Anchor  
Warps and fenders

## **Disclaimer**

---

The Company offers the details of this vessel in good faith but cannot guarantee or warrant the accuracy of this information nor warrant the condition of the vessel. A buyer should instruct his agents, or his surveyors, to investigate such details as the buyer desires validated. This vessel is offered subject to prior sale, price change, or withdrawal without notice.

# Photos

---



Westerly Centaur Sapphire



Westerly Centaur bilge keel



Westerly Centaur rudder



Westerly Centaur deck view



Westerly Centaur foredeck



Westerly Centaur





Westerly Centaur main hatch



Westerly Centaur cockpit



Westerly Centaur saloon



Westerly Centaur instruments



Westerly Centaur galley



Westerly Centaur foreberth



Westerly Centaur heads



Westerly Centaur engine