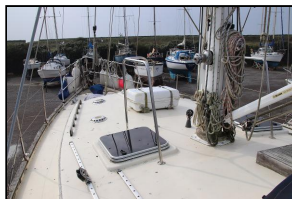




Custom Ocean Going Sea Trader 41 – Marra



| | | | |
|-------------------|------------------------------|---------------------------|---------------------|
| Make: | Custom | Boat Name: | Marra |
| Model: | Ocean Going Sea Trader 41 | Hull Material: | Fibreglass (GRP) |
| Length: | 12.5 m | Draft: | 2.2 m |
| Price: | GBP 49,500 | Number of Engines: | 1 |
| Year: | 1988 | Fuel Type: | Diesel |
| Condition: | Used | | |

Marra

For those seeking a yacht that can undertake long voyages safely and offer good accommodation, this South African build yacht is ideal. With ample headroom of 2m, she has a spacious feel.

Her present owners have cruised her widely, and spent five years on a North Atlantic circuit including stops at Madeira, the Windward Islands, and the Azores. They found she coped well with even the most intense of weather fronts.

She was designed by E S Barends and built in Durban by Desmo Engineering, completed in 1988. Originally junk rig, she was then sailed to the UK. Documentary proof of VAT paid from HM Customs & Excise is available.

A complete refit was carried out and she was re rigged as a Bermudan Cutter. The original engine was replaced with a Volvo MD 2040 diesel.

The saloon and galley are large, there are two heads compartments, and holding tanks for black and for grey water.

The saloon is attractively presented with u shaped seating around a good sized table. Two single berths are offered here.

There are two berths in the fore cabin which has an adjacent heads compartment.

The owners cabin, situated aft, features a large double berth which benefits from a fully sprung mattress. There is a seating area, a dressing table, and room to stand. There is a large ensuite heads compartment with a dressing/storage area. The heads is roomy and is equipped with shower, wash basin and sea toilet.

The well equipped galley extends both port and starboard. To port it is fitted with an ENO cooker with twin burner hob and oven. There are two stainless steel sinks with pressurised hot and cold water, plus hand pumped fresh and salt water. To starboard is further work surface, a microwave and a large front opening fridge.

Measurements

| | | | |
|-----------------|--------|--------------------------|----------|
| LOA: | 12.5 m | Windlass: | Electric |
| Beam: | 3.99 m | | Windlass |
| Max Draft: | 2.2 m | Electrical Circuit: | 12V |
| Cabin Headroom: | 2 m | Fuel Tanks #: | 1 |
| | | Fuel Tanks Cap.: | 600 L |
| | | Fresh Water Tanks #: | 1 |
| | | Fresh Water Tanks Cap.: | 600 L |
| | | Holding Tanks #: | 2 |
| | | Number of single berths: | 2 |
| | | Number of double berths: | 4 |
| | | Number of Cabins: | 3 |
| | | Number of Heads: | 2 |

Propulsion

Engine #1

| | | | |
|---------------|---------------------------|-----------------|---------|
| Engine Make: | Volvo | Hours: | 1200 |
| Engine Model: | MD 2040 three cylinder | Power: | 40 hp |
| | | Propeller Type: | 3 Blade |

Primary Engines: Inboard

Additional Information

Long keel

Sails:

Selden mast and spars, Antal 44st main winches, Lewmar 16 cuttersail winches, and 3 Antal ST winches on the mast.

Granny bars, deck tracks and blocks by Rutgeron.

Fully battened main with 3 slab reefs, lazy jacks and stack pack.

Storm trisail (unused) on a separate mast-track.

Hanked on inner foresail with one reefpoint.

Roller furling Yankee jib.

Unused spare jib.

Instruments:

Pedestal compass

Depth and rudder indicator

VHF radio

Garmin GPS

Navtex

IAS receiver

Navman plotter

Log and depth

SSR radio with full bandwidth

Equipment:

Hydrovane wind steering

Canvas sun awning

Canvas water catcher

Avon Redcrest dinghy

Sebo dinghy

Suzuki 4 stroke o/b

4x anchors chain and warp

Warps and fenders

Boarding ladder
MOB ladder
6 man life raft
Electric anchor windlass

Disclaimer

The Company offers the details of this vessel in good faith but cannot guarantee or warrant the accuracy of this information nor warrant the condition of the vessel. A buyer should instruct his agents, or his surveyors, to investigate such details as the buyer desires validated. This vessel is offered subject to prior sale, price change, or withdrawal without notice.

Photos



Ocean Going Sea Trader on her berth



Ocean Going Sea Trader on the hard



Ocean Going Sea Trader deck view



Ocean Going Sea Trader furling gear



Ocean Going Sea Trader looking aft



Ocean Going Sea Trader sprayhood



Ocean Going Sea Trader cockpit with cushions



Ocean Going Sea Trader saloon



Ocean Going Sea Trader saloon table



Ocean Going Sea Trader chart table



Ocean Going Sea Trader galley



Ocean Going Sea Trader master cabin



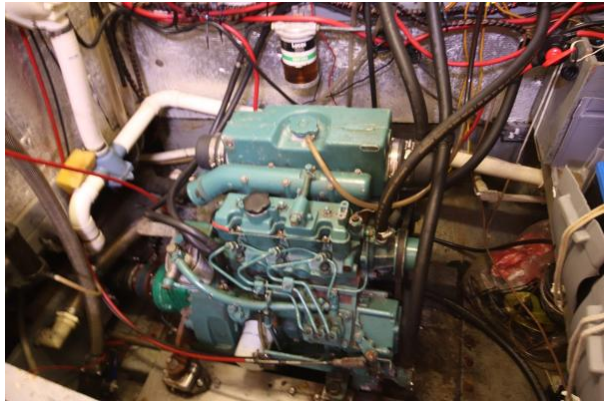
Ocean Going Sea Trader master ensuite



Ocean Going Sea Trader forecabin



Ocean Going Sea Trader forward heads



Ocean Going Sea Trader engine compartment