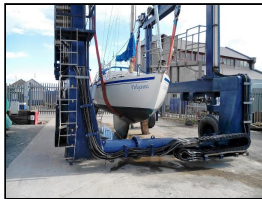




Albin Vega 27 – Pollyanna



Make:	Albin	Boat Name:	Pollyanna
Model:	Vega 27	Hull Material:	Fibreglass (GRP)
Length:	8.23 m	Draft:	1.37 m
Price:	GBP 8,750	Number of Engines:	1
Year:	1976	Fuel Type:	Diesel
Condition:	Used	Number:	6341161
Location:	Maryport, Cumbria, United Kingdom		

Pollyanna

Built in 1977 by Albin Yachts this 27 footer is a delight having been maintained to the highest standards by a dedicated owner. The hull has been epoxied and copper coated so no need to worry about osmosis or anti fouling.

The original engine has been replaced by an Yanmar IGM 10 (1998).

The standing rigging has been replaced as has the sprayhood. The cabin is heated by an Eberspacher.

The wiring was completely renewed in 2013.

There is no tender but 2.5hp out board is included in the sale.

This yacht positively gleams and any new owner will be pleased to take her on.

The well laid out saloon has space for a table, which is conveniently stored above the foreberth. Heating is provided by an Eberspacher heater.

There are two berths in the forepeak and a further two are provided by the saloon seating.

There is a heads compartment forward which has a door which closes either the heads or the full forecabin. There is a hanging locker port and starboard in the forecabin.

All interior lights are LED, as are navigation lights.

The port side galley area contains the two burner hob and grill. Opposite on the starboard side is the sink with pumped cold water. Included is a Tilley Talisman pressure cooker, pans, crockery and cutlery.

Measurements

LOA:	8.23 m	Fuel Tanks #:	1
Beam:	2.43 m	Fuel Tanks Cap.:	36 L
Min. Draft:	1.37 m	Fresh Water Tanks #:	1
Max Draft:	1.37 m	Fresh Water Tanks Cap.:	68 L
Cabin Headroom:	1.8 m	Number of single berths:	2
		Number of double berths:	2
		Number of Heads:	1

Propulsion

Engine #1

Engine Make:	Yanmar	Engine Year:	1998
Engine Model:	1GM10	Hours:	unknown
Primary Engines:	Inboard	Power:	10 hp

Additional Information

Long fin keel

Instruments:

Nasa Clipper Duet log/depth
Nasa wind indicator
Garmin chart plotter (charts for UK and Eire)

Equipment:

25lb plough anchor with chain
35lb Mantus anchor
2.5hp out board
Windpilot Pacific Light windvane self steering unit
Sprayhood
Sail cover
Dodgers
Warps and fenders
Eberspacher cabin heater
Spinnaker pole

Sails:

1 x mainsail (2013)
2 x furling headsails
1 x spinnaker
1 x storm jib (2013)

Disclaimer

The Company offers the details of this vessel in good faith but cannot guarantee or warrant the accuracy of this information nor warrant the condition of the vessel. A buyer should instruct his agents, or his surveyors, to investigate such details as the buyer desires validated. This vessel is offered subject to prior sale, price change, or withdrawal without notice.

Photos



Albin Vega 27 port side view



Albin Vega 27 in the hoist



Albin Vega 27 on her berth



Albin Vega 27 cockpit



Albin Vega 27 deck view



Albin Vega 27 looking aft



Albin Vega 27 cockpit



Albin Vega 27 view from main hatch



Albin Vega 27 main hatch



Albin Vega 27 below



Albin Vega 27 two berths in saloon



Albin Vega 27 saloon looking aft



Albin Vega 27 foreberth



Albin Vega 27 stove



Albin Vega 27 sink



Albin Vega 27 heads



Albin Vega 27 engine