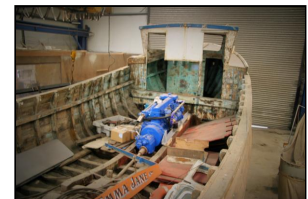
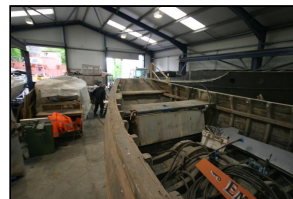




Whitby Coble 37 – Emma Jane



Make: Whitby Coble
Model: 37
Length: 11.27 m
Price: GBP 3,995
Year: 1986
Condition: Used
Location: Hesketh Bank,
Lancashire, United
Kingdom

Boat Name: Emma Jane
Hull Material: Wood
Draft: 1.21 m
Number of Engines: 1
Fuel Type: Diesel
Number: 6242536

Emma Jane

A traditional fishing trawler from the North East Coast, Emma Jane is a 37ft Whitby Coble, 11ft beam and approx. 4ft draft. Built around 1986 this beautiful boat is in the early stages

of an extensive restoration. Unfortunately the current owner has now realised that this project is more work than he is prepared to complete.

Generally the hull is in excellent condition and virtually all of the unpleasant stripping down work has been done. For someone who is enthusiastic to do a wooden boat project this is an ideal opportunity to take on a project where nearly all of the uncertainties have been removed. There is still a lot of work to do to put this boat back into serviceable condition, but for the right person this will be very rewarding. She comes complete with a Ford 2715E 6 cylinder diesel engine with hydraulic PRM gearbox. When fully assembled, a hydraulic pump mounts to the front of the engine to power a Raasay Engineering 1000kg hauler. The engine has been undergoing an over-haul and this work is virtually complete.

If the boat is to be completed to its original specification a brief summary of the work still to do includes:-

- Renewal of keel bolts and engine bed bolts
- Fabricate and fit gunwale capping/rubbing strake
- Fabricate and fit clinker rubbing strakes
- Repairs to wheel house aft bulkhead
- Fabricate and fit wheel house door
- Refit/replace wheel house windows
- Fabricate and fit new sole bearers
- Re-fit or replace sole boards, including cockpit and wheel house
- Re-install engine and hydraulic pump
- Re-fit fuel tank
- Re-fit hydraulic header tank
- Fit gantry and hauler
- Re-fit/replace rudder and steering system
- Wood preserver and Painting
- Electrics and electronics

This list is by no means exhaustive and will vary depending on the individual's requirements.

Douglas Marine Ltd, whom started this project alongside the owner, are available to complete this work or aspects of it should it be required. Please feel free to get in contact with them

Measurements

LOA: 11.27 m
Beam: 3.35 m
Min. Draft: 1.21 m
Max Draft: 1.21 m

Propulsion

Engine #1

Engine Make:	Ford	Hours:	unknown
Engine Model:	2715E 6 cylinder	Power:	unknown
Primary Engines:	Inboard		

Disclaimer

The Company offers the details of this vessel in good faith but cannot guarantee or warrant the accuracy of this information nor warrant the condition of the vessel. A buyer should instruct his agents, or his surveyors, to investigate such details as the buyer desires validated. This vessel is offered subject to prior sale, price change, or withdrawal without notice.

Photos



Whitby Coble project



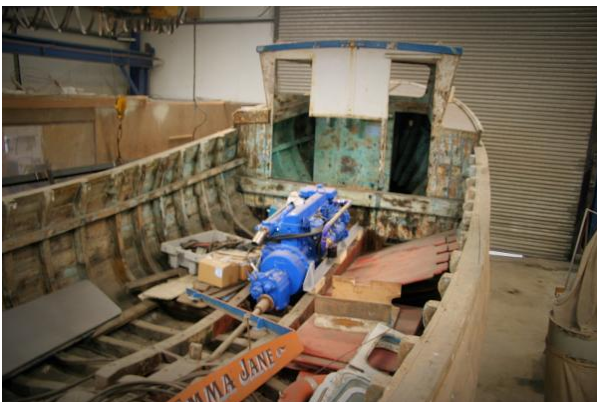
Whitby Coble project



Whitby Coble project



Whitby Coble project



Whitby Coble project



Whitby Coble project



Whitby Coble project



Whitby Coble project



Whitby Coble project