



Southerly 105 – Kestrel of Poole



Make: Southerly
Model: 105
Length: 9.98 m
Price: GBP 35,000
Year: 1981
Condition: Used

Boat Name: Kestrel of Poole
Hull Material: Fibreglass (GRP)
Draft: 1.88 m
Number of Engines: 1
Fuel Type: Diesel

Kestrel of Poole

The Southerly 105 is a deck saloon yacht with a lifting keel . Kestrel of Poole is presented in excellent condition and has been well maintained in her present ownership. For example, sea cocks were replaced in 2017 as was the bow thruster.

Built by Northshore in 1981 the design features a raised wheelhouse with with a secondary

Partnership Yacht Brokers - Jacqui Bugden
Dinorwic Marina, Y Felinheli LL56 4JN, United Kingdom
Tel: +44 7890588206 Tel: +44 800 6125162 office@partnershiptyachtbrokers.co.uk
<http://www.partnershiptyachtbrokers.co.uk/>

inside steering position. The interior is both spacious and comfortable.

The hydraulically lifting keel allows her to take the ground with no problems and makes it possible to explore creeks and estuaries while offering excellent sailing performance. It was overhauled in 2005. She has a draft of 0.9m with keel up and 1.88m with keel down.

The large cockpit is fitted with an all over cover, giving good shelter in the British climate. There is a large boarding platform at the stern and a set of davits for the tender.

A 2017 survey is available.

The saloon is attractive and is fitted with a flat screen TV and a DVD player. Heating is provided by an Eberspacher cabin heating system.

The three cabin layout offers a total of 8 berths. There are two overlapping single berths in the fore cabin, There is a double berth and a single berth in the saloon. The aft cabin is reached from the port side of the saloon and features a double and a single berth.

The heads compartment is fitted with a Jabsco sea toilet and a wash basin. A holding tank is fitted.

The chart table and lower steering position are located to starboard in the saloon.

The galley comprises sink and drainer and two burner gas stove with oven and grill. The front opening fridge operates on gas, 12 volt and mains.

Measurements

LOA:	9.98 m	Windlass:	Electric
Beam:	3.53 m		Windlass
Min. Draft:	0.9 m	Electrical Circuit:	12V
Max Draft:	1.88 m	Liferaft Capacity:	4
Cabin Headroom:	1.82 m	Fuel Tanks #:	1
		Fuel Tanks Cap.:	272 L
		Fresh Water Tanks #:	1
		Fresh Water Tanks Cap.:	272 L
		Holding Tank Cap.:	90 L
		Number of single berths:	4
		Number of double berths:	4
		Number of Cabins:	3
		Number of Heads:	1

Propulsion

Engine #1

Engine Make:	Bukh	Engine Year:	1981
Engine Model:	36	Hours:	unknown
Primary Engines:	Inboard	Power:	36 hp
Drive Type:	Shaft Drive	Propeller Type:	3 Blade

Additional Information

Lifting keel 0.9m - 1.88m

Sails:

Fully battened main (Arun 2007)
Furling genoa (Arun 2007)
Cruising chute and pole
Storm jib
Spare main and genoa

Instruments:

Simrad wind speed direction
Log
Depth sounder
Standard horizon chart plotter
Radar
AIS
Navtex
Radar
Cobra VHF
Compass

Equipment:

CQR anchor with 40m of chain
Danforth anchor with rope and chain
Lemar electric anchor winch (2008)
Auto helm (2002)
Bow thruster ((2017)
4 man liferaft (in date until 2020)
Dodgers, sprayhood, cockpit tent
Warps and fenders
2 x gas bottles
Gas regulator
2 x cockpit cushions

Cockpit shower
Horseshoe lifebuoy
Dan buoy
3 x fire extinguishers
Fire blanket
Flat screen TV with DVD player (2010)
Eberspacher cabin heater
Clock and barometer
EPIRB
Flares

Electrical:

12 v
Shore power with Ctec battery charger (2013)
2 x 100 AH domestic batteries (2018)
1 x 100 AH engine battery (2018)
1 x 120 AH bow thruster battery (2013)
Vetus charge controller
Solar panel (2008)

Disclaimer

The Company offers the details of this vessel in good faith but cannot guarantee or warrant the accuracy of this information nor warrant the condition of the vessel. A buyer should instruct his agents, or his surveyors, to investigate such details as the buyer desires validated. This vessel is offered subject to prior sale, price change, or withdrawal without notice.

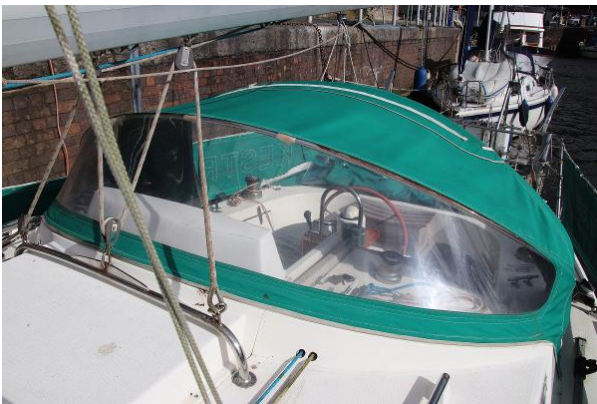
Photos



Southerly 105 on her berth



Southerly 105 cockpit view



Southerly 105 sprayhood



Southerly 105 helm position



Southerly 105 inner helm position



Southerly 105 saloon



Southerly 105 saloon seating



Southerly 105 galley



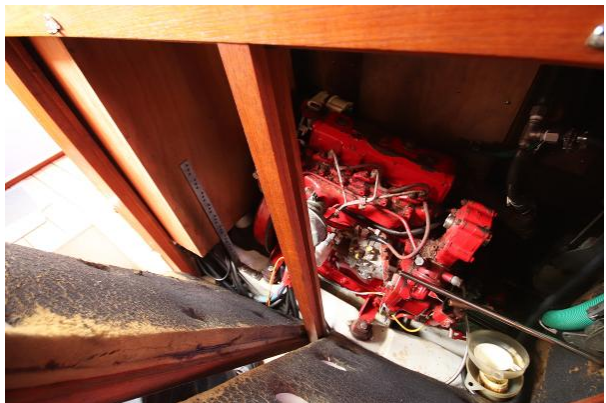
Southerly 105 aft cabin



Southerly 105 forecabin



Southerly 105 heads



Southerly 105 engine