



Colvic Sailer 26 – Sundowner



Make:	Colvic	Boat Name:	Sundowner
Model:	Sailer 26	Hull Material:	Fibreglass (GRP)
Length:	7.92 m	Draft:	0.91 m
Price:	GBP 4,250	Number of Engines:	1
Year:	1979	Fuel Type:	Diesel
Condition:	Used		

Sundowner

The Colvic Sailer 26 was designed by Colin Feltham, and this example was professionally completed by Lytham dockyard, just a stone's throw from her present berth.

As can be seen she will take the ground quite happily on her bilge keels. Sundowner has been cruised as far as Cherbourg, the Scilly Isles, Thames Estuary and in and around the

Irish Sea. She is well maintained by her present engineer owner who is now looking to retire due to ill health.

She had a professionally reconditioned engine fitted 6 years ago.

There are a total of six berths available with two berths in the fore cabin, two quarter berths located aft port and starboard, and a settee berth on the port side which can either be a double or a single as required. As can be seen from the photos this is a full sized double berth.

When dining, a table fits in the saloon.

The separate heads compartment is situated on the port side in between the saloon and the fore cabin.

The galley is situated to starboard and comprises a sink, a twin burner gas cooker and adequate storage.

Measurements

LOA:	7.92 m	Electrical Circuit:	12V
Beam:	2.74 m	Fuel Tanks #:	1
Min. Draft:	0.91 m	Fuel Tanks Cap.:	20 L
Max Draft:	0.91 m	Fresh Water Tanks #:	1
Cabin Headroom:	1.82 m	Fresh Water Tanks Cap.:	20 L
		Number of single berths:	4
		Number of double berths:	2
		Number of Heads:	1

Propulsion

Engine #1

Engine Make:	Yanmar	Engine Year:	2013
Engine Model:	12YSE	Power:	12 hp
Primary Engines:	Inboard		

Additional Information

Bilge keel

Sails:

Jib

Furling genoa

Main

Instruments:

Depth sounder
VHF radio
Compass
Autohelm

Equipment:

Inflatable tender
Eberspacher heater
Anchor
Warps and Fenders
Sprayhood
Dodgers

Disclaimer

The Company offers the details of this vessel in good faith but cannot guarantee or warrant the accuracy of this information nor warrant the condition of the vessel. A buyer should instruct his agents, or his surveyors, to investigate such details as the buyer desires validated. This vessel is offered subject to prior sale, price change, or withdrawal without notice.

Photos



Colvic Sailer 26 takes the ground



Colvic Sailer 26 on her berth



Colvic Sailer 26 cockpit



Colvic Sailer 26 saloon



Colvic Sailer 26 galley



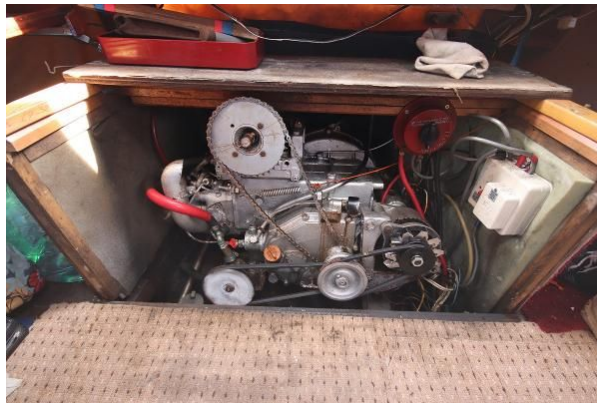
Colvic Sailer 26 double berth made up



Colvic Sailer 26 forecabin



Colvic Sailer 26 heads



Colvic Sailer 26 engine