



## Glastron GS249 – Happy Days



**Make:** Glastron  
**Model:** GS249  
**Length:** 7.54 m  
**Price:** GBP 16,995  
**Year:** 1998  
**Condition:** Used

**Boat Name:** Happy Days  
**Hull Material:** Fibreglass (GRP)  
**Draft:** 1 m  
**Number of Engines:** 1  
**Fuel Type:** Diesel

### Happy Days

The Glastron GS 249 is a Sport Cruiser which has the impressive speed and handling of a Glastron, plus good accommodation.

Happy Days will cruise at 20 knots and has a maximum speed of 30 knots. Previously used on the Thames she has more recently been used on the Menai Strait and copes well in either

environment.

There are cabins fore and aft, sleeping four, a galley, a dining area and a separate heads compartment with shower.

The cockpit provides a comfortable helm position and seating for eight. This is an ideal social space. There is a full canopy in excellent condition with removable front, side and rear screens.

The main cabin is a good size with comfortable seating for 4 with a dining table. This creates sleeping accommodation for two. Separate heads with pump out toilet and full height shower and hand basin. Mid cabin double berth with good headroom. The galley is to port and has microwave and front opening fridge, sink and storage.

## Measurements

---

Cruising Speed:	20 kn	Seating Capacity:	8
Max Speed:	30 kn	Deadrise at Transom:	20 °
LOA:	7.54 m	Electrical Circuit:	12V
Beam:	3 m	Fuel Tanks #:	1
Min. Draft:	1 m	Fuel Tanks Cap.:	211 L
Max Draft:	1 m	Fresh Water Tanks #:	1
Cabin Headroom:	1.85 m	Fresh Water Tanks Cap.:	68 L
		Number of single berths:	2
		Number of double berths:	2
		Number of Heads:	1

## Propulsion

---

### Engine #1

Engine Make:	Volvo Penta	Engine Year:	1998
Engine Model:	150TD duo prop	Hours:	unknown
Primary Engines:	Inboard	Power:	150 hp
		Propeller Type:	6 Blade

## Additional Information

---

Instruments:

Glastron instrumentation  
Garmin GPS

Equipment:

Cockpit cover  
Warps and fenders  
Anchor  
Cushions  
Crocery and cutlery

Road trailer not included but available by negotiation

## **Disclaimer**

---

The Company offers the details of this vessel in good faith but cannot guarantee or warrant the accuracy of this information nor warrant the condition of the vessel. A buyer should instruct his agents, or his surveyors, to investigate such details as the buyer desires validated. This vessel is offered subject to prior sale, price change, or withdrawal without notice.

# Photos

---



Glastron GS249 on her berth



Glastron GS249 on the hard



Glastron GS249 cockpit cover



Glastron GS249 bathing platform



Glastron GS249 stern gate



Glastron GS249 cockpit



Glastron GS249 helm position



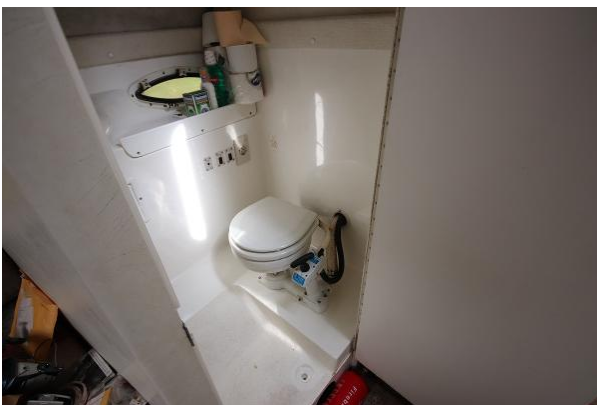
Glastron GS249 saloon area



Glastron GS249 galley



Glastron GS249 fridge



Glastron GS249 heads compartment



Glastron GS249 accessible engine